



Brattleby Publication of
Neighbourhood Planning Area
Consultation Statement
August 2015

CONTENTS

CONTENTS2

Introduction..... 3

The purpose of this document..... 3

Regulations and government guidance..... 3

Publication timescales..... 3

Publication responses 4

Outcomes 4

Appendix 1 Brattleby Neighbourhood Plan Application 5

Appendix 2 WLDC Designation Approval 7

Appendix 3 MOD Response 8

Introduction

The purpose of this document

1. This document provides a record of the publication that took place regarding the Brattleby Neighbourhood Development Plan Area and related Neighbourhood Planning Body. The main methods used to promote the publication process are also documented, along with the main findings from the publication. As this was only a publication process and not a more open consultation, the response rate is not expected to be high.
2. This formal publication period provided members of the public and other key stakeholders an opportunity to submit comments on the proposed neighbourhood plan area and proposed neighbourhood planning body for Brattleby. The proposed neighbourhood planning body is Brattleby Parish Council and the proposed neighbourhood planning area is shown in appendix 1 along with the rest of the parish council's application.

Regulations and government guidance

3. The regulations associated with this first stage of neighbourhood planning provide guidance on the criteria to be included for this phase. Within this publication, we as the local planning authority must publicise on our website:
 - a copy of the area application
 - details of how to make representations; and
 - the deadline for the receipt of those responses and representations, being not less than 6 weeks following the date on when the application is first publicised¹

Publication timescales

4. The publication period for this stage of the neighbourhood development plan process must cover a minimum period of six weeks¹. The proposed publication period is from the 2 July to the 13 August 2015.

Timescales break down as follows:

Publication period	02.07.15 – 13.08.15
Cabinet meeting date or delegation	13.08.15

¹ Regulation 6, Town and Country Planning, England – The Neighbourhood Planning (General) Regulations, April 2012

Previous consultation

5. This matter has not been the subject of previous consultation. The parish council are at the earliest stages of their neighbourhood plan development process.

Publication responses

6. In total we received 1 response to the publication. This is generally in keeping with the low response rate that we receive with neighbourhood plan area consultations. The general observation received offered no firm objection or support (see appendix 3). The breakdown of responses received are;

Email	0
Web consultation system	0
Letter	1
Total	1

Outcomes

7. The results of this publication will be used by the council to decide whether or not to approve the Brattleby Neighbourhood Planning Area and body for the neighbourhood planning process to be undertaken by Brattleby Parish Council.
8. West Lindsey District Council has approved the application by **Brattleby Parish Council** to have the parish of Brattleby designated as a neighbourhood area, for the purposes of producing a neighbourhood plan (see appendix 2).

APPENDIX 1

Mr Luke Brown,
Neighbourhood Planning,
WLDC,
The Guildhall,
Marshall's Yard,
Gainsborough.
DN21 2NA.

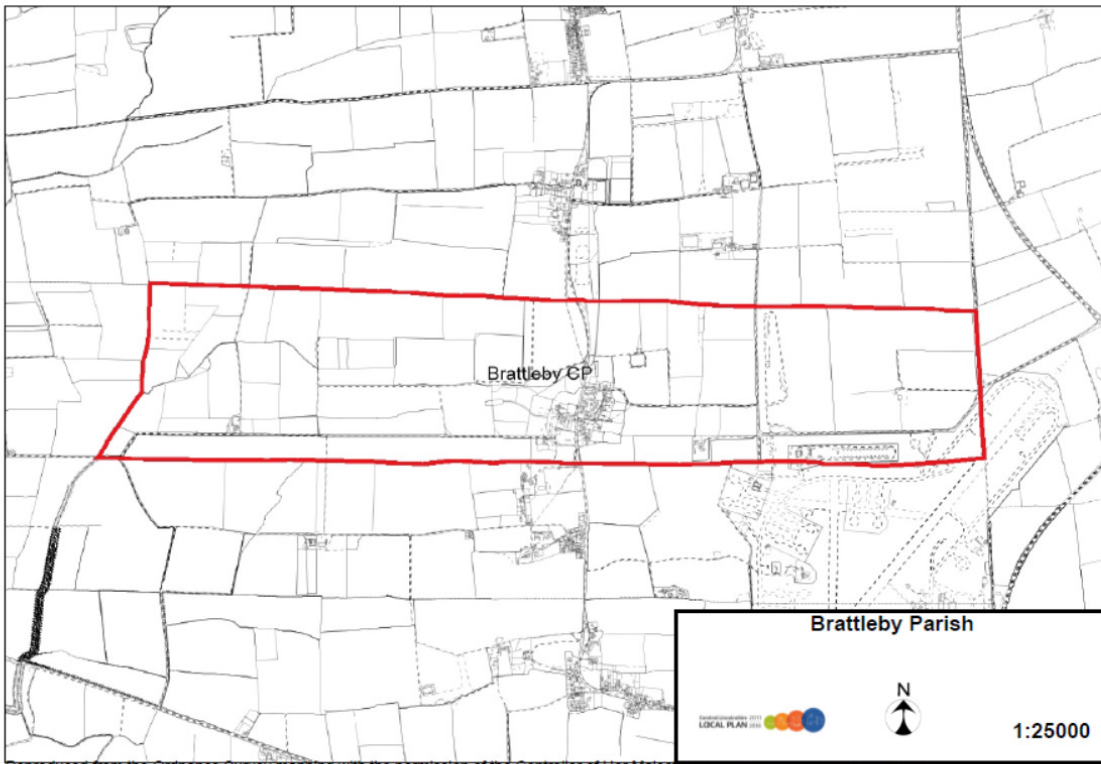
30/06/15

Proposed Neighbourhood Plan Brattleby.

Dear Luke,

Following our meeting yesterday regarding the above, please accept this letter formal indication of my Parish Council's wish to commence with a NHP to cover Brattleby to the Parish boundaries. Please see enclosed O/S map.

Yours Faithfully,
Mike Spencer,
Chair Brattleby P/C



Reproduced from the Ordnance Survey mapping with the permission of the Controller of Her Majesty's Stationery Office ©Crown copyright.
 Unauthorised reproduction infringes ©Crown copyright and may lead to prosecution or civil proceedings.
 City of Lincoln Council Licence No. LA 100018414 North Kesteven District Council Licence No. LA 100017926 West Lindsey District Council Licence No. LA 100018701
 Date 10 July 2015

APPENDIX 2



Guildhall
Marshall's Yard
Gainsborough
Lincolnshire DN21 2NA

Telephone 01427 676676
Web www.west-lindsey.gov.uk

Your contact for this matter is:

13/08/2015 Luke Brown
Luke.brown@west-lindsey.gov.uk

Dear Mike,

BRATTLEBY NEIGHBOURHOOD PLAN AREA DESIGNATION APPROVAL

Brattleby Neighbourhood Plan area was formally approved by West Lindsey District Council on the 13th August 2015. There was one representation made during the consultation where no objections were made to the notion of undertaking a Neighbourhood Plan. The representation was from a landowner who will be effected by the content of your neighbourhood plan and WLDC encourage that the community consult with this, and other, landowners throughout the process as per regulations.

If you need any further information, please do not hesitate to contact me on the above details.

Yours Sincerely

Luke Brown
Neighbourhood Planning Officer

APPENDIX 3



**Ministry
of Defence**

Luke Brown
Neighbourhood Planning
West Lindsey District Council
The Guildhall
Marshalls Yard
Gainsborough
DN21 1NA

Defence Infrastructure Organisation

Safeguarding Department
Statutory & Offshore

Defence Infrastructure Organisation
Kingston Road
Sutton Coldfield
West Midlands
B75 7RL

Tel: +44 (0)121 311 3656 **Tel (MOD):** 94421 3656

Fax: +44 (0)121 311 2218

E-mail: DIO-safeguarding-statutory@mod.uk

www.mod.uk/DIO

27 July 2015

Dear Mr Brown

Neighbourhood Plan Brattleby

Thank you for consulting the Ministry of Defence (MOD) in relation to the above consultation.

The area of Brattleby is encompassed by statutory aerodrome and meteorological safeguarding consultation zones for RAF Scampton and Ingham.

The main concern of the MOD relates to potential development which may infringe/inhibit defence operational capabilities. Therefore any development exceeding 45.7m should be referred to this office for review.

I trust this adequately explains our position on this matter.

Yours sincerely

Louise Dale
Assistant Safeguarding Officer (Statutory &
Offshore) DIO Safeguarding