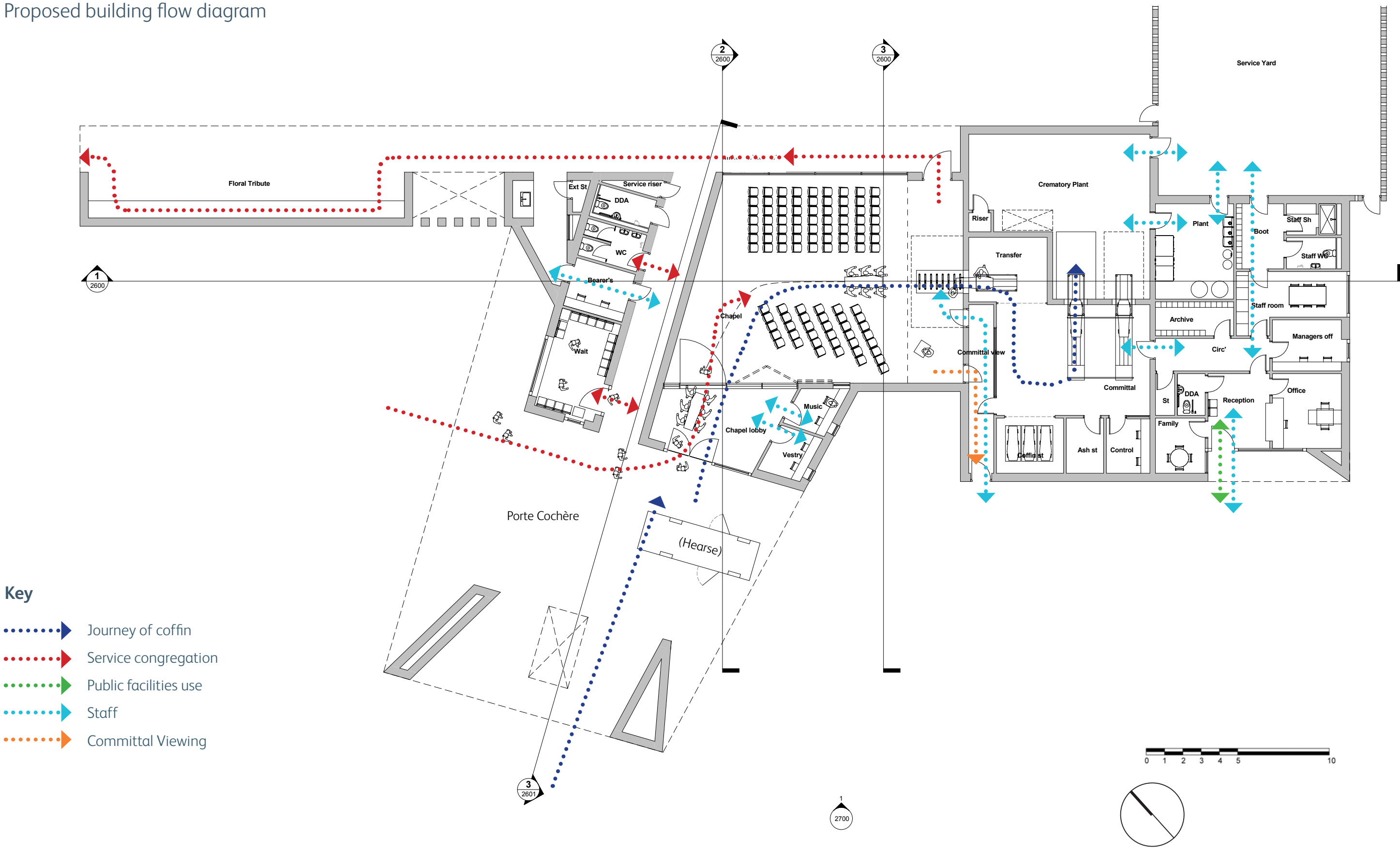


Gainsborough Crematorium

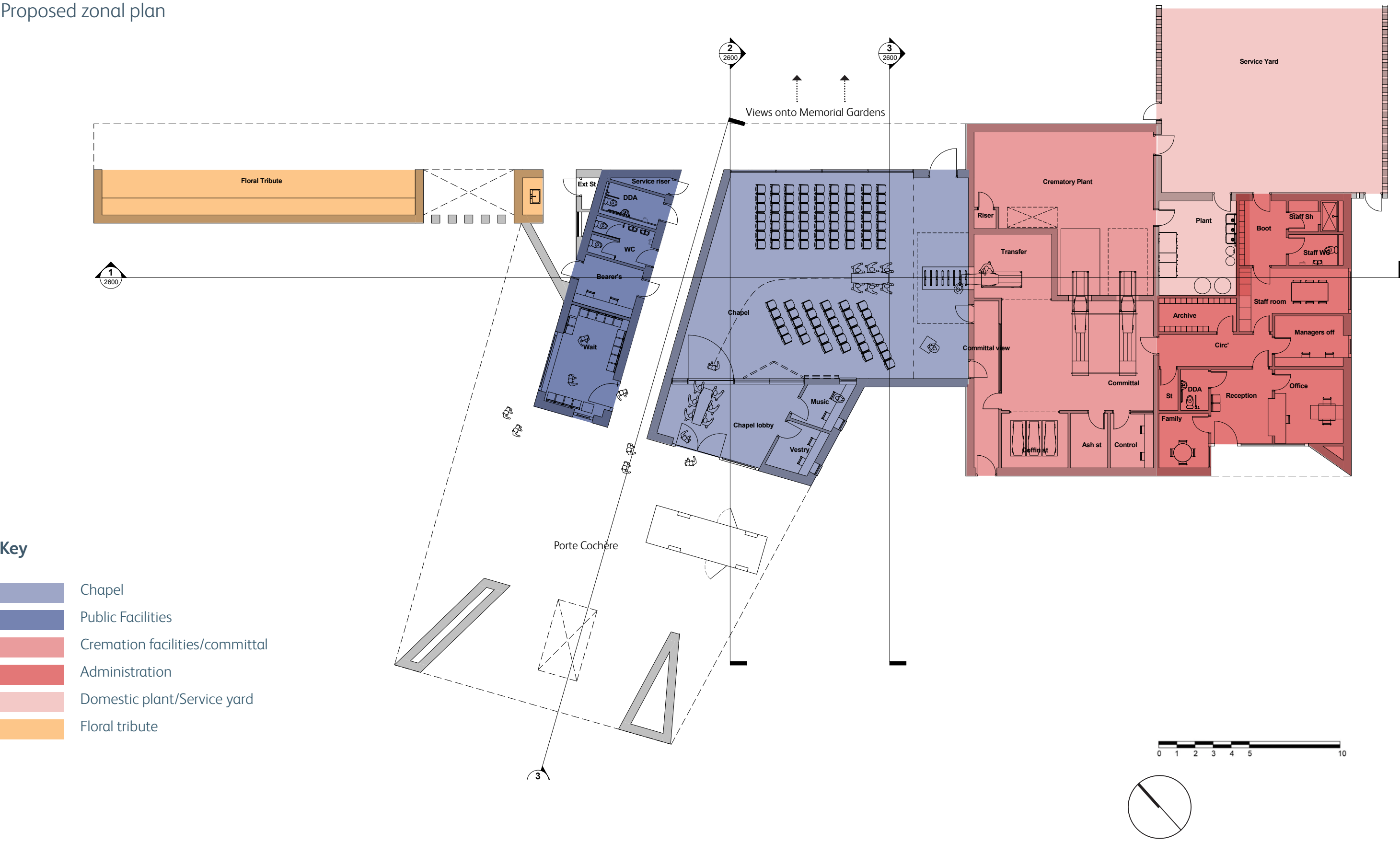
Building Layout



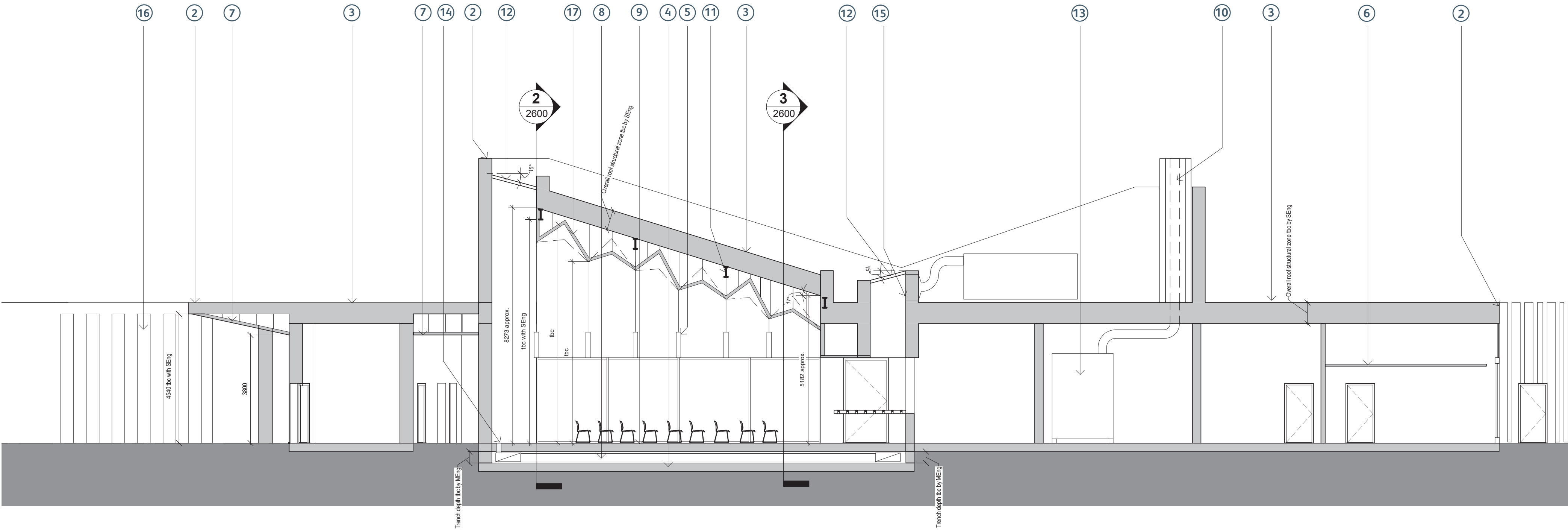
Proposed building flow diagram



Proposed zonal plan



- Key**
- 1 Concealing RWPs and overflows throughout the building
 - 2 Brick coping
 - 3 Reinforced bitumen membrane roof
 - 4 Building slabs
 - 5 Suspended lighting over chapel
 - 6 Suspended ceiling
 - 7 Brick slip soffit
 - 8 Localised floor trench to allow for services to run beneath finished floor level
 - 9 Raised floor (finish TBC with client)
 - 10 Cremator chimney (exact height TBC with specialist)
 - 11 Chapel structural roof members
 - 12 Roof light over catafalque & chapel wall
 - 13 Cremator plant
 - 14 Floor slots for chapel air supply
 - 15 Air extract from bulkhead
 - 16 Brick colonnade
 - 17 Suspended 'fold' ceiling

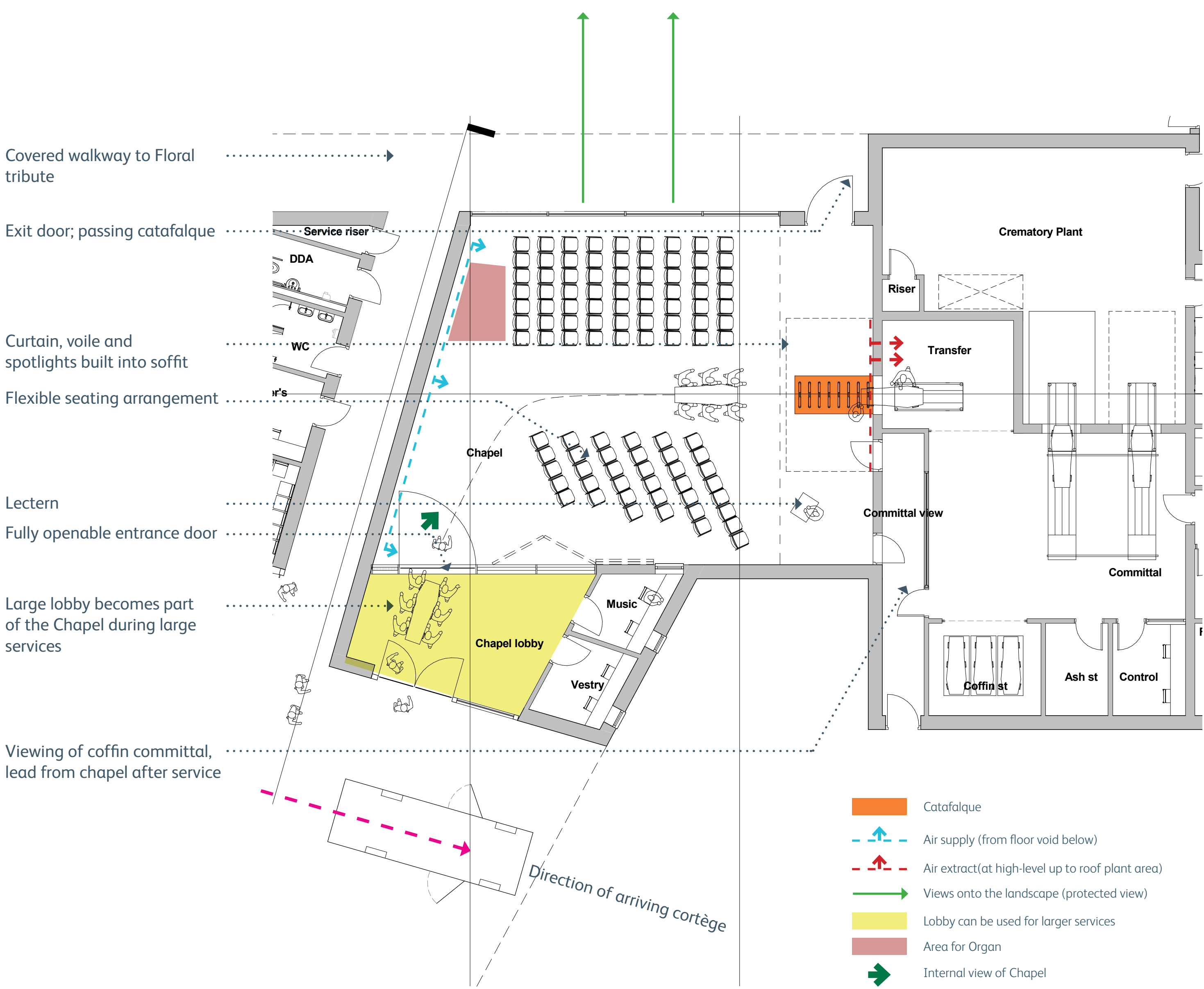


Gainsborough Crematorium

Chapel Design



Internal View of the Chapel



White timber slat



Timber slat 'alcove'



Rooflight - Channelling light into the Chapel



Internal datum



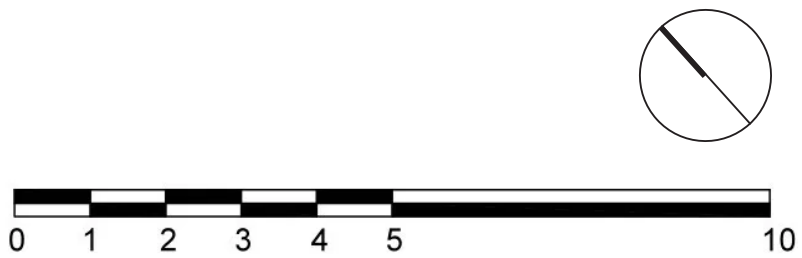
Channelling light



Channelling light



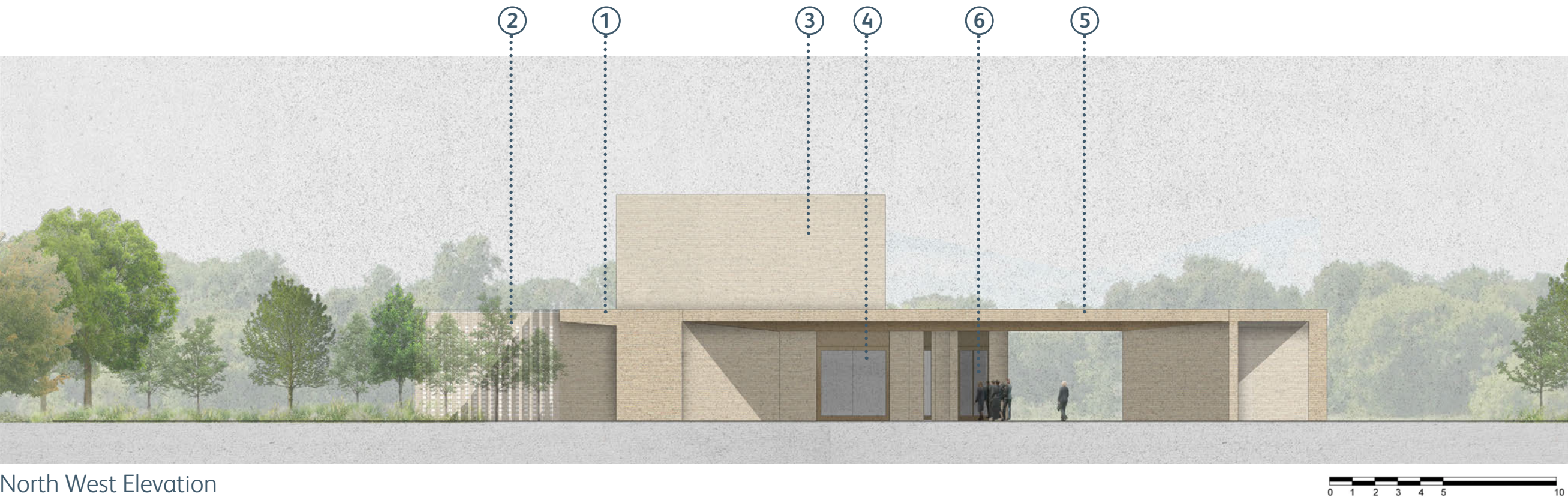
Chapel lobby & Porte Cochère connectivity



Gainsborough Crematorium
Crematorium Design - External

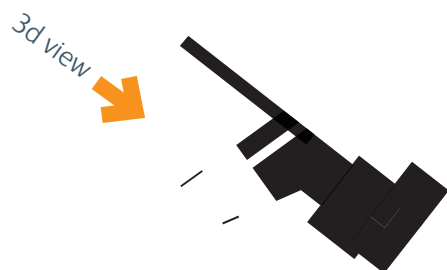


View of Approach to Crematorium



North West Elevation

- Key
- ① Floral Tribute canopy
 - ② Service yard 'hit & miss' brick (beyond)
 - ③ Chapel
 - ④ Waiting area + Facilities
 - ⑤ Porte Cochère
 - ⑥ Chapel entrance



1. Light Buff Brick



2. Brick splay



3. Brick soffit



4. Bronze window frame



5. Brick and bronze



6. Brick colonnade



7. Earthy materials pallet



8. Landscape features



9. Covered walkways



10. Elevating the Chapel