

Gainsborough Crematorium

Landscape



Existing site aerial and boundary



Proposed Landscape Plan @ 1:1000



Formal Landscape to frontage



Protected views onto Forest landscape



Planting that responds to building form



Unobstructed views of the landscape

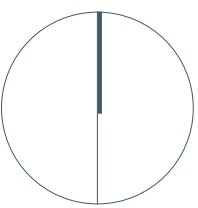


Planting to building frontage



Soft landscaping to break up hard surfaces

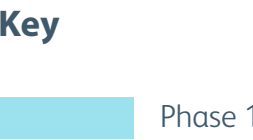
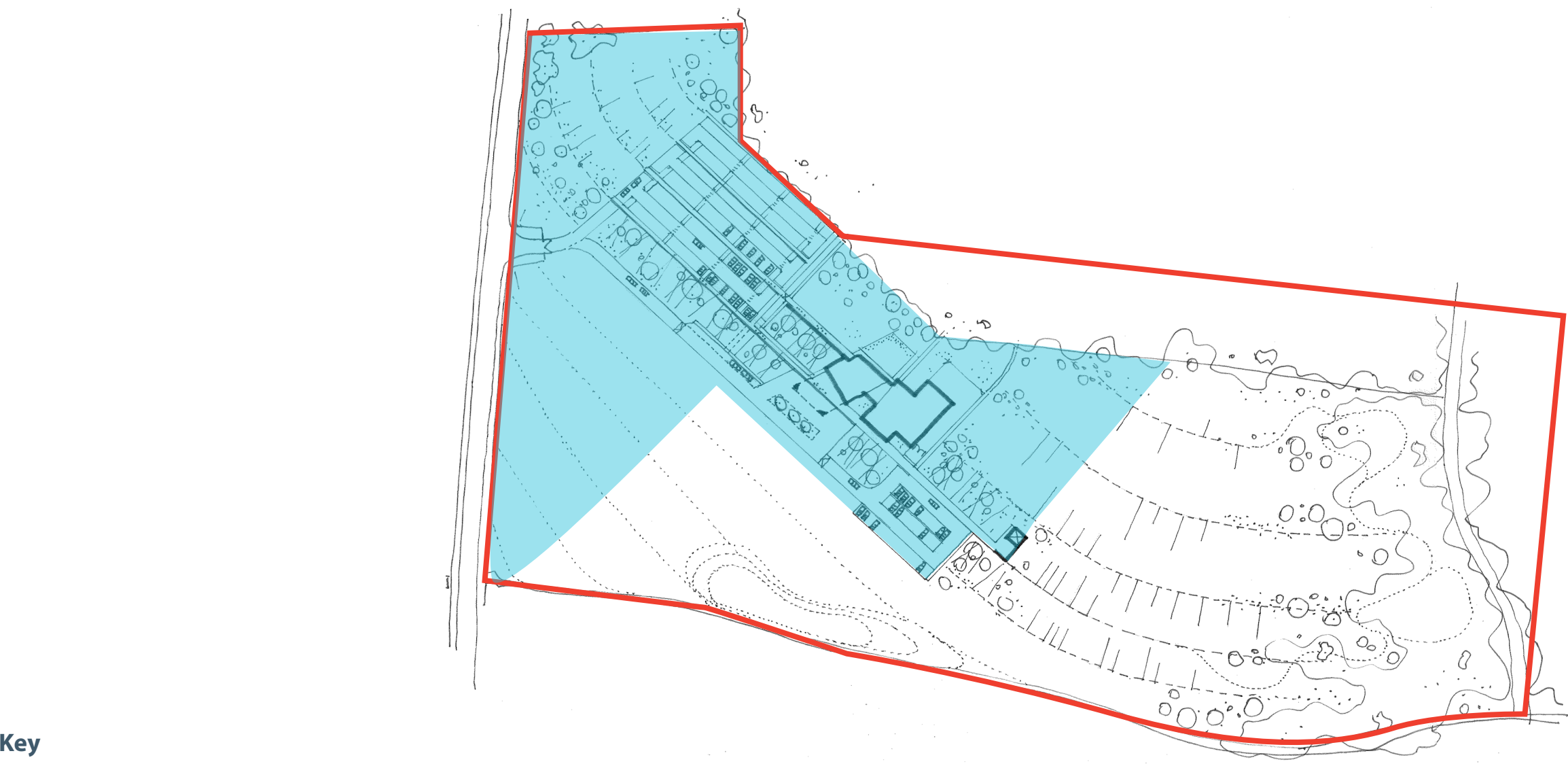
- | | |
|---|---|
| 1 Crematorium | 8 Staff and memorial garden visitors car park |
| 2 Book of Remembrance | 9 Proposed main car park |
| 3 Floral tribute & exit | 10 Memorial gardens |
| 4 Protected view with reflective pool | 11 Crematorium service area |
| 5 Congregation entrance route with water rill | 12 Attenuation |
| 6 Cortege pick up area | 13 Extended woodland / Remembrance Walk |
| 7 Porte Cochere | |



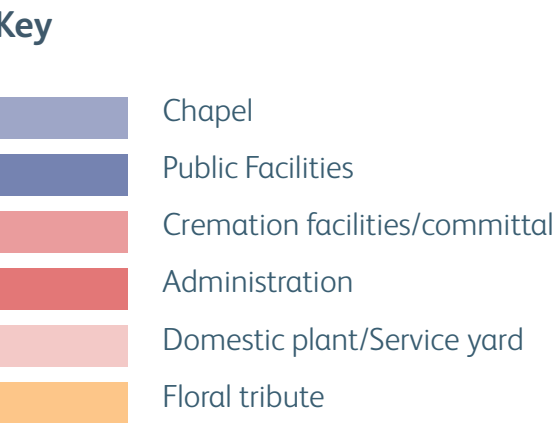
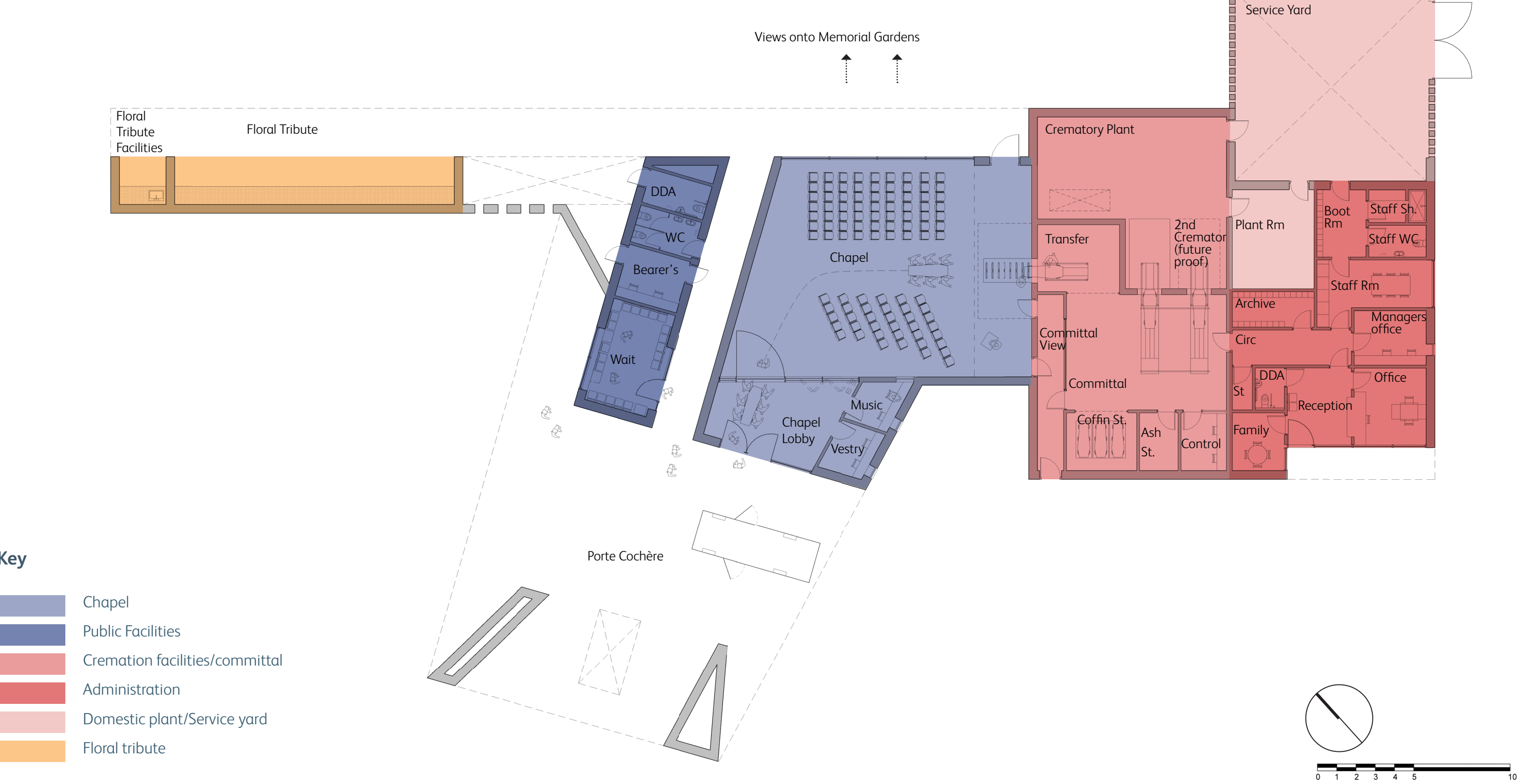
Gainsborough Crematorium

Building Layout

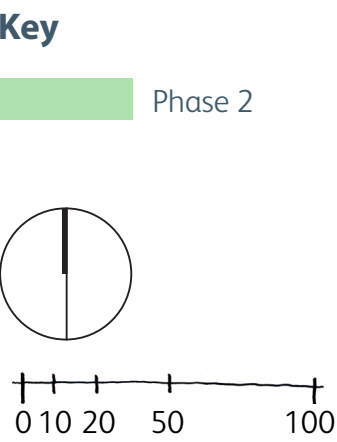
Proposed phase 1



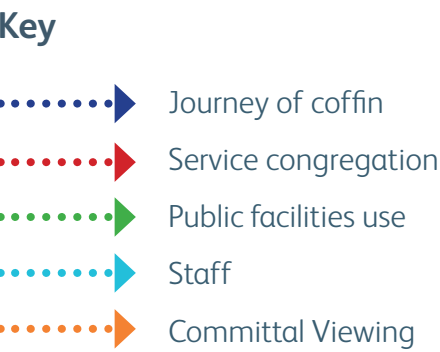
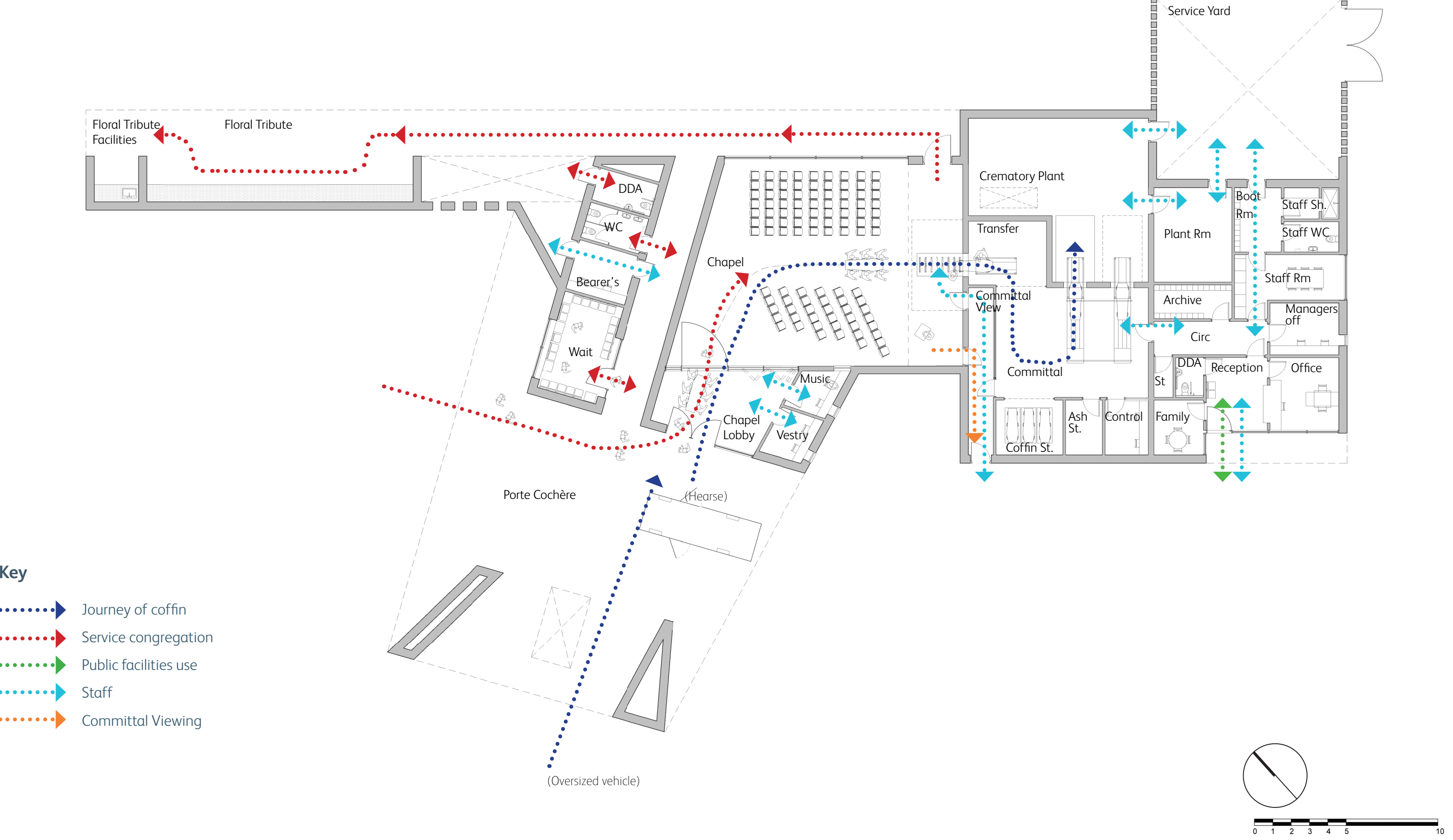
Proposed zonal plan



Proposed phase 2

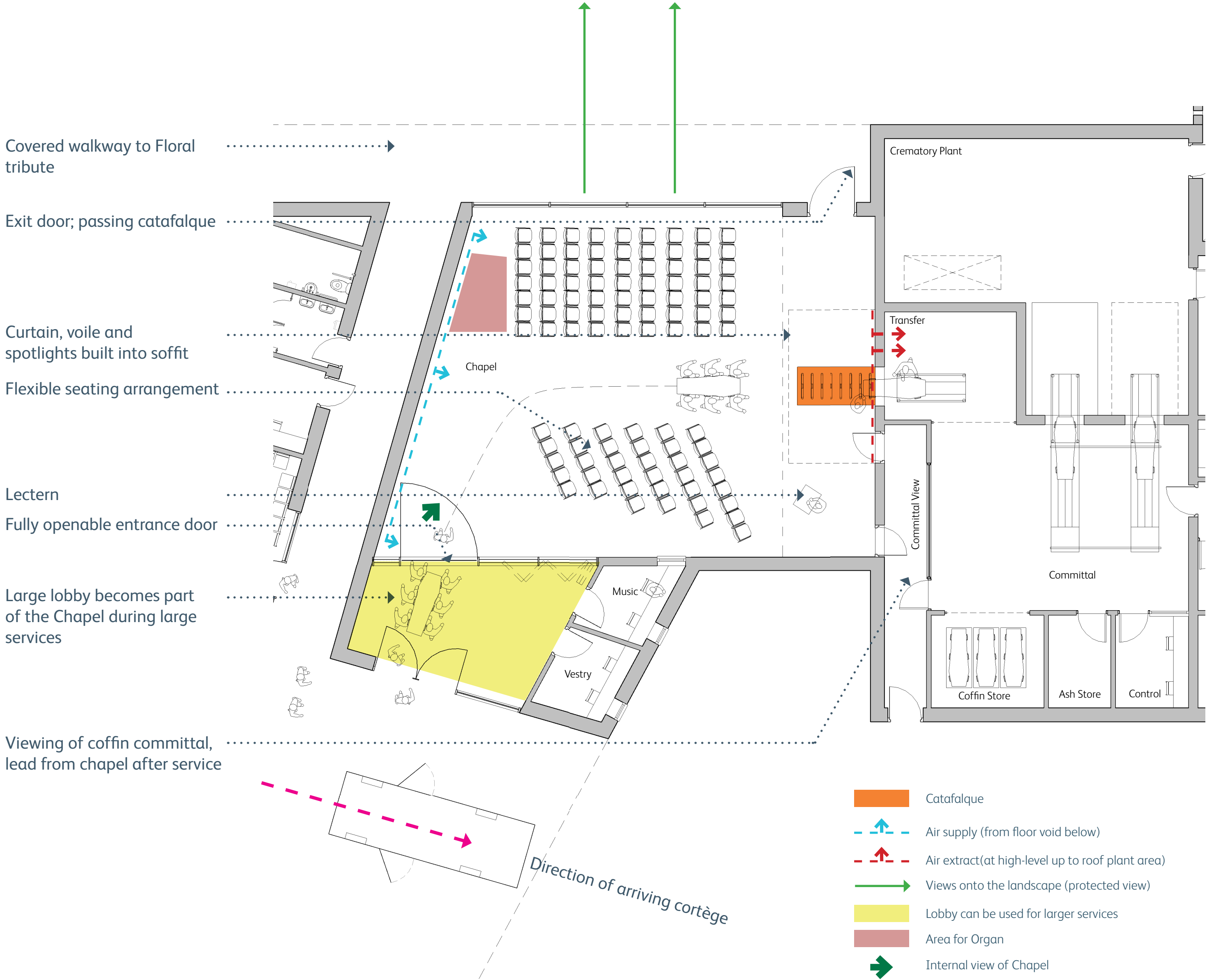


Proposed building flow diagram





Internal View of the Chapel



White timber slat



Timber slat 'alcove'



Rooflight - Channelling light into the Chapel



Internal datum



Channelling light



Channelling light

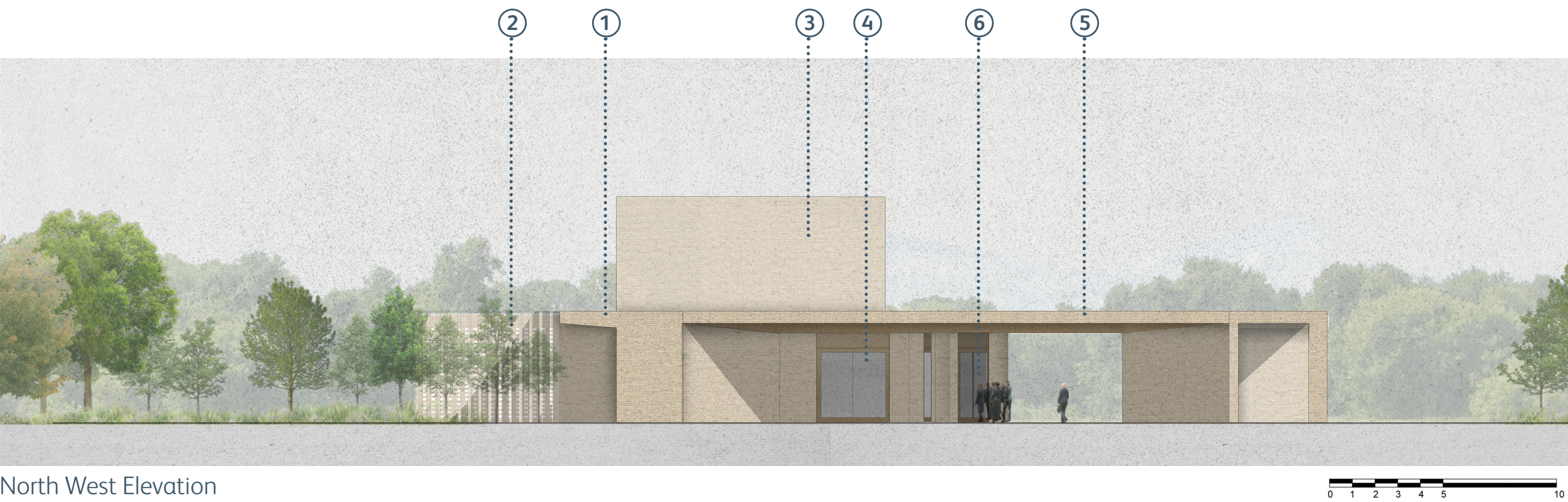


Chapel lobby & Porte Cochère connectivity

Gainsborough Crematorium
Crematorium Design - External



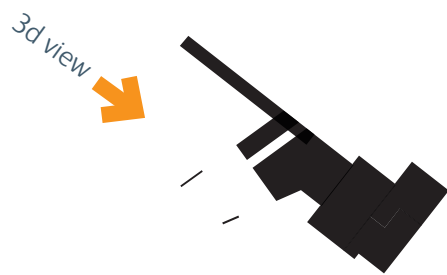
View of Approach to Crematorium



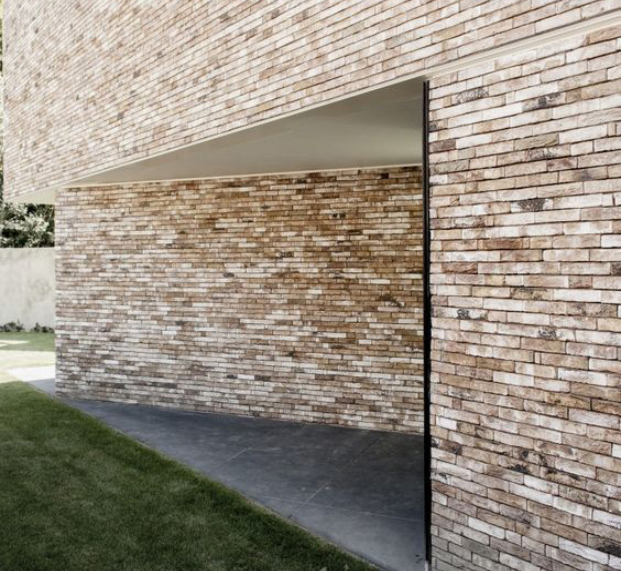
North West Elevation

Key

- ① Floral Tribute canopy
- ② Service yard 'hit & miss' brick (beyond)
- ③ Chapel
- ④ Waiting area + Facilities
- ⑤ Porte Cochère
- ⑥ Chapel entrance



1. Light Buff Brick



2. Brick splay



3. Brick soffit



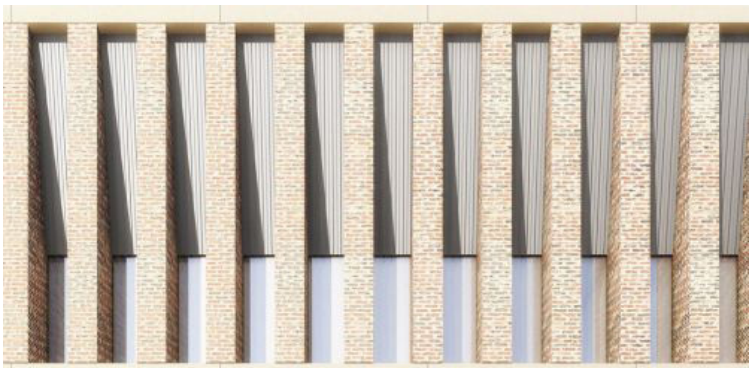
4. Bronze window frame



5. Brick and bronze



6. Brick colonnade



7. Earthy materials pallet



8. Landscape features



9. Covered walkways



10. Elevating the Chapel